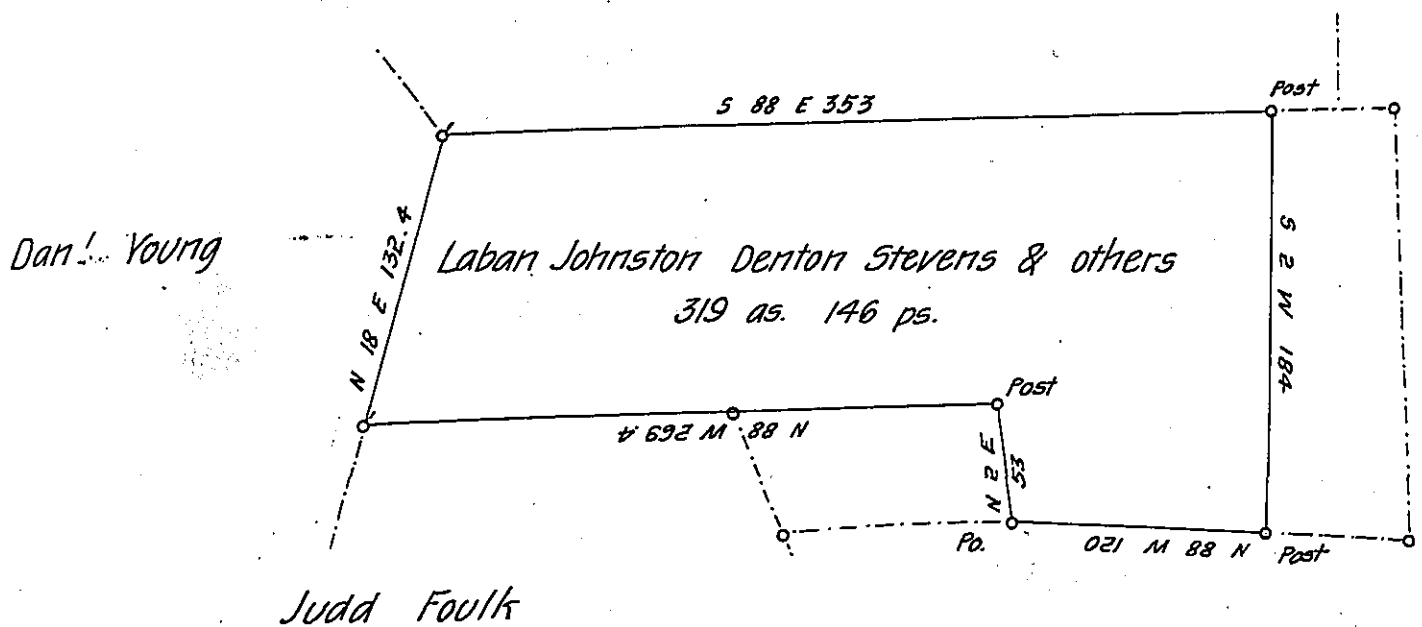


William Reed

John Reed Jr



Dan'l Young

Laban Johnston Denton Stevens & others
319 as. 146 ps.

Judd Foulk

Timothy Reed

Situate in Southampton township Bedford County Containing 319 acres
 146 perches and the usual allowance of six per Cent for Roads &c. Being a part
 of a larger tract of land Containing 406 Acres & Allowance Originally Surveyed
 on Warrant granted to Titus Reed dated 21st Feby. 1794.

Sam'l Ketterman

To J. M. Campbell Esqr.

C.S.

S. G.

IN TESTIMONY that the above is a copy of the original remaining on file in
 the Department of Internal Affairs of Pennsylvania, made
 conformably to an Act of Assembly approved the 16th day of
 February, 1833, I have hereunto set my Hand and caused
 the Seal of said Department to be affixed at Harrisburg,
 this twenty third day of October 1906

Isaac N. Brown
 Secretary of Internal Affairs.